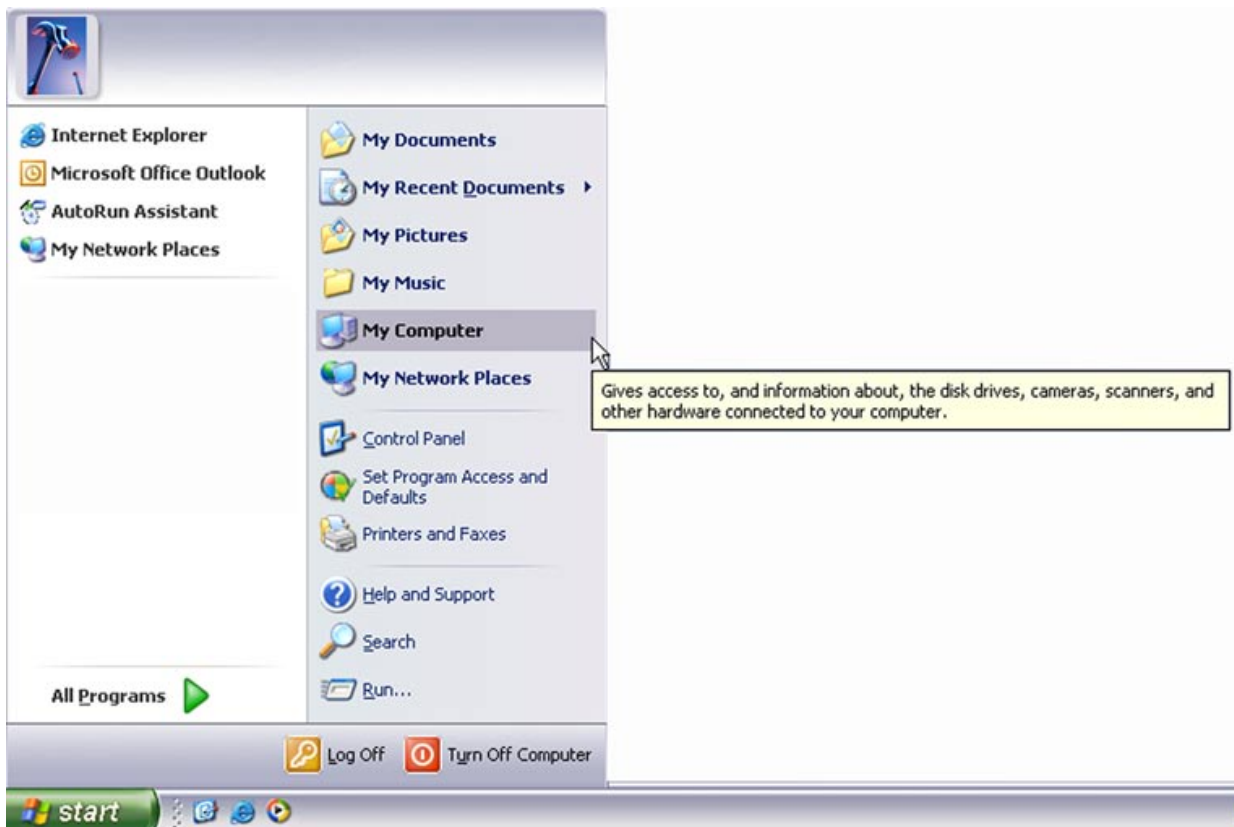
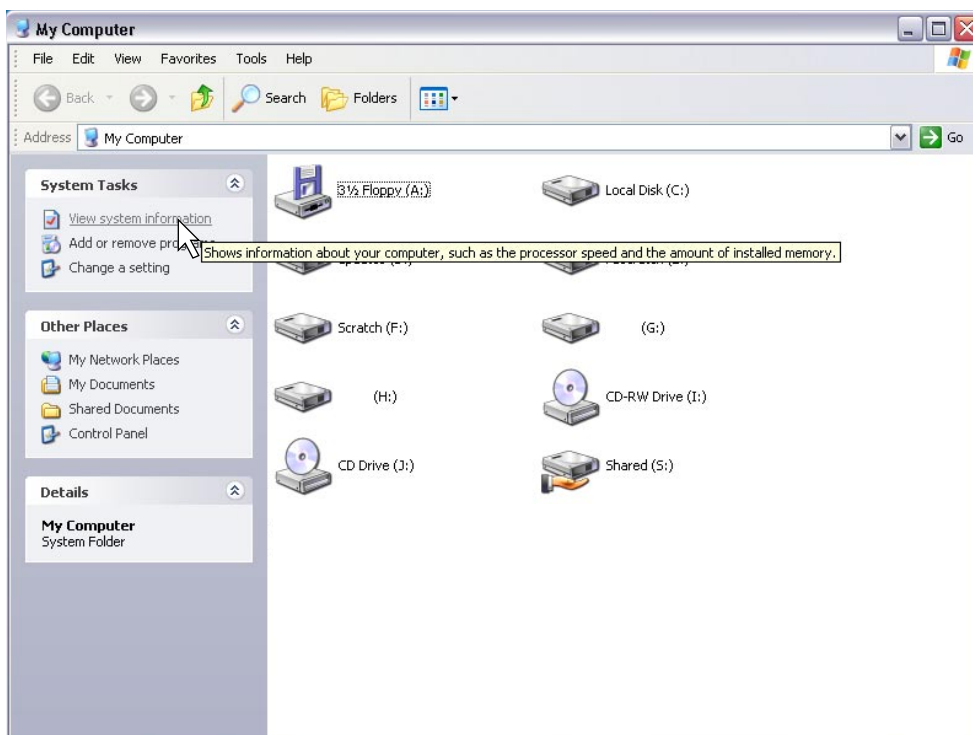


Manually Updating/Installing Windows XP Drivers



Step One

Go to Start then my Computer



Step Two

Now choose VIEW SYSTEM INFORMATION, as above



Step Three

In SYSTEM PROPERTIES choose HARDWARE, then click on DEVICE MANAGER.



Step Four

Find the device you wish to update the drivers for and right click on it and choose UPDATE DRIVER



Step Five

Click on **INSTALL FROM A LIST OR A SPECIFIC LOCATION** then click Next.



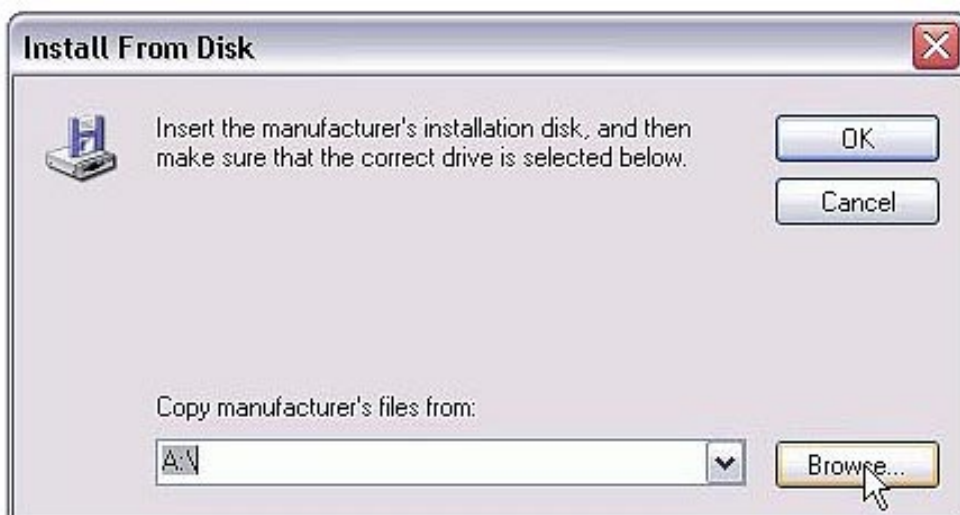
Step Six

Click on **DON'T SEARCH, I WILL CHOOSE THE DRIVER TO INSTALL** then click **NEXT**.



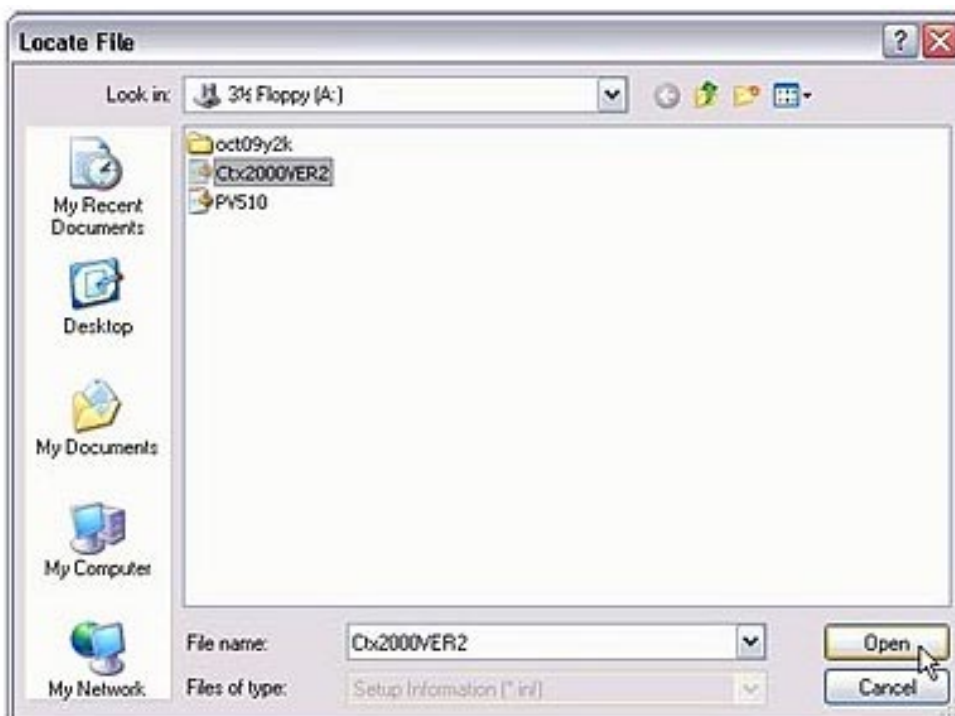
Step Seven

Click on HAVE DISK



Step Eight

Click on BROWSE and find the folder containing the drivers.



Step Nine

Locate the .info file for your device and click OPEN.



Step Ten

Windows will Load the driver



Step Eleven

If you see this screen then click CONTINUE ANYWAY



Step Twelve

Click Finish and your drivers are loaded.