

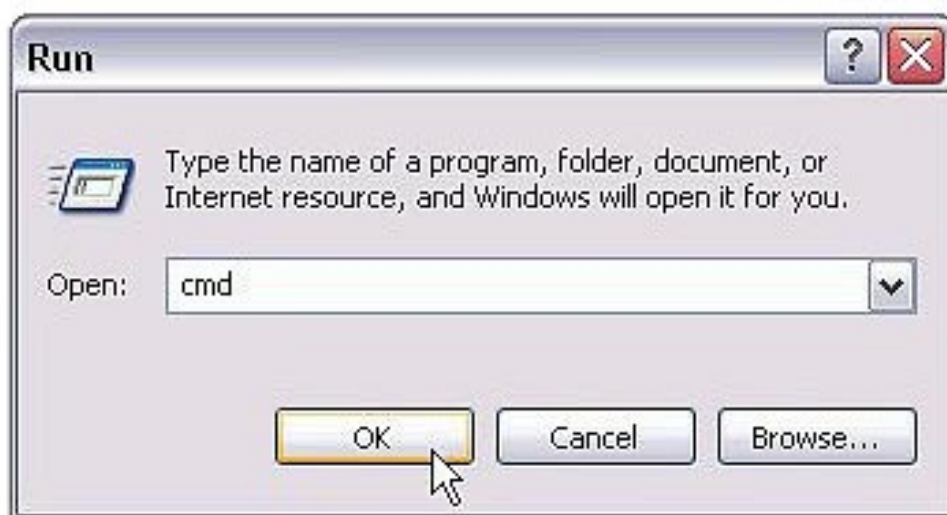
## Checking Basic Internet Protocol Configuration Windows XP

*When this PC is not the one connected  
to the Internet Gateway*



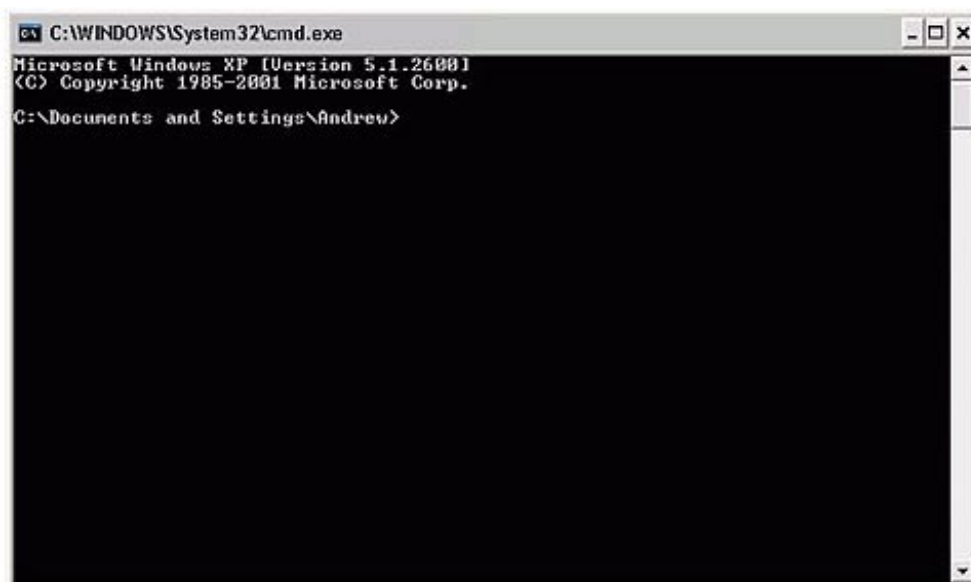
## Step One

Go to Start the Run.



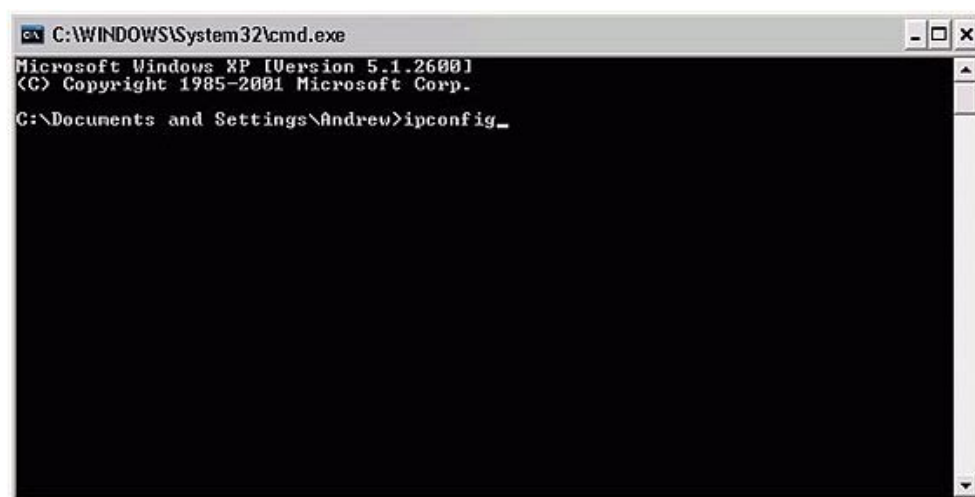
## Step Two

Type in cmd (as above). Click OK.



### Step Three

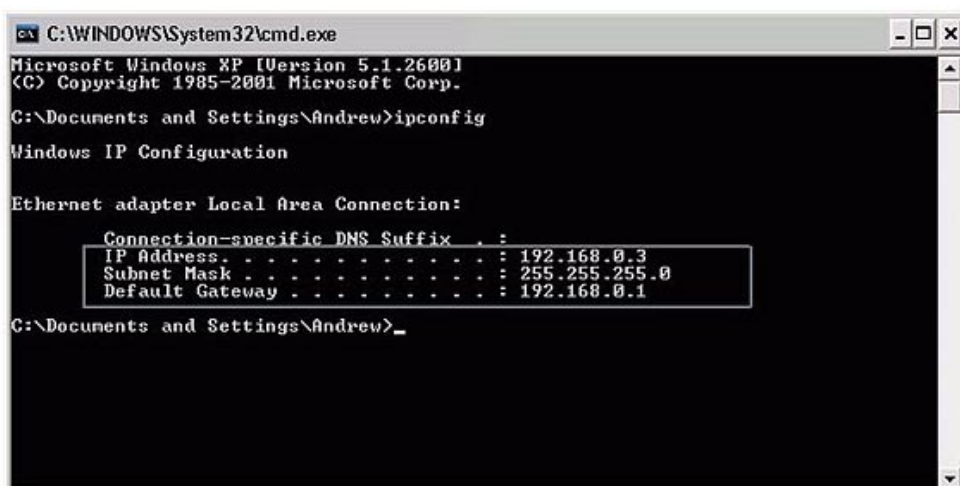
You should see this screen. It's the Command Prompt



Type in ipconfig (as above) and hit Enter/Return

### Step Four

Type in ipconfig (as above) and hit Enter/Return.



```
C:\WINDOWS\System32\cmd.exe
Microsoft Windows XP [Version 5.1.2600]
(C) Copyright 1985-2001 Microsoft Corp.

G:\Documents and Settings\Andrew>ipconfig

Windows IP Configuration

Ethernet adapter Local Area Connection:

    Connection-specific DNS Suffix . : 
    IP Address . . . . . : 192.168.0.3
    Subnet Mask . . . . . : 255.255.255.0
    Default Gateway . . . . . : 192.168.0.1

G:\Documents and Settings\Andrew>_
```

## Step Five

If it looks the same as in the area outlined as above, then all is well.  
(192.168.0.3 the 3 at the end may be a different number on your computer).